



OneDrop™ Series

RESIDENTIAL ULTRASONIC WATER METER

Applications

- Revenue metering
- Residential submetering
- Commercial buildings
- Leakage detection
- AMR / AMI and billing
- Drive-by metering



Features

- Residential potable water consumption metering.
- Complies with applicable portions of ANSI / AWWA C708 Standard.
- Durable, proven Stainless Steel 304 sensor body. Solves the challenges of harsh environments.
- No moving parts. Wear-free ultrasonic technology.
- Lead-free, Complying with NSF / ANSI 61, Annex G.
- Patented sensor design. Provides precise signal, robust performance, and not impacted by water impurity.
- Excellent long-term stability with consistent performance. Accuracy does not degrade over time.
- Tamper-proof design, tampering detection is recorded by the meter.
- More than 10 year battery life. Replaceable battery.
- Not affected by magnetic interference.
- Various alarms available: reverse flow, pipe burst, leakage, battery low.
- Wide dynamic range, low starting flowrate.
- Detects water leakage.
- Unique straight-through sensor design with no obstruction and very low pressure drop.
- Large LCD, 9 digit display.
- Totally encapsulated, water-proof design.
- Data Logger with 700 daily totals and 24 monthly totals.
- AMR / AMI ready with optional encoder, pulse and wireless interfaces.

DS-1drop-180901_Rev.5



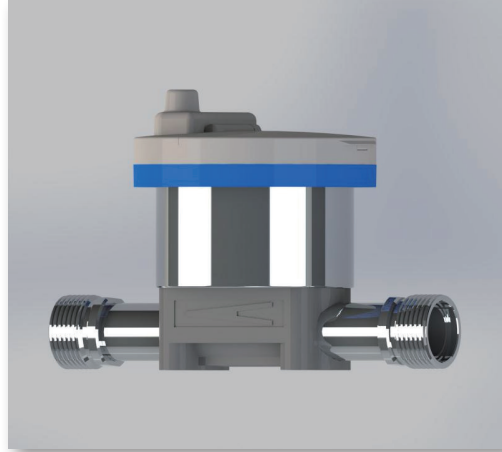
Spire Metering Technology LLC, 249 Cedar Hill Street, Marlborough, MA 01752, USA

Tel +1 978 263-7100 / 888 738-0188 (toll-free) **Fax** +1 978 418-9170 sales@spiremt.com www.SpireMT.com



OneDrop™ Series

RESIDENTIAL ULTRASONIC WATER METER



A member of the OneDrop™ Series, the 280W-D Residential Ultrasonic Water Meter is specially designed for domestic water metering applications, where conventional water meters fail due to harsh environment, solids in water, performance degradation, magnetic vandalization or inability to detect leaks.

The OneDrop™ is a solid state water meter. It offers the most advanced water flow measurement by using state-of-the-art ultrasonic technology. Its flow sensor does not have any moving parts that can wear or tear, which provides a robust and accurate meter with no maintenance.

Unlike the other ultrasonic water meters on the market which have a reflector support fixture in the middle of the flow tube, the OneDrop™ uses a unique straight-through sensor design. No measuring components intrude into the flow path, thus it causes no obstruction to the flow and offers very low pressure drop.

The OneDrop™ complies with the applicable portion of the AWWA C708 standard. It can be used for either new installation or retrofitting AWWA water meters. The performance of the OneDrop™ far exceeds that of a conventional mechanical water meter. It provides accurate measurement over a wide flow rate span, and the accuracy does not degrade over time.

The OneDrop™ comes with a large LCD which can display the flow total, leakage alarm, reverse flow, and more. The meter also has a remote readout which can be provided as Encoder, M-Bus or LoRa wireless.

Spire Metering's OneDrop™ Residential Ultrasonic Water Meter stands out among its competition due to its robust performance, patented sensor design, tamper-proof feature, multiple AMR / AMI options and capability to detect very low flowrate. It works reliably even when the water has particles and the environment is harsh. Residential installations can profit from the advantage of the wear-free water flow measurement, namely, precision, operational security and long service life.



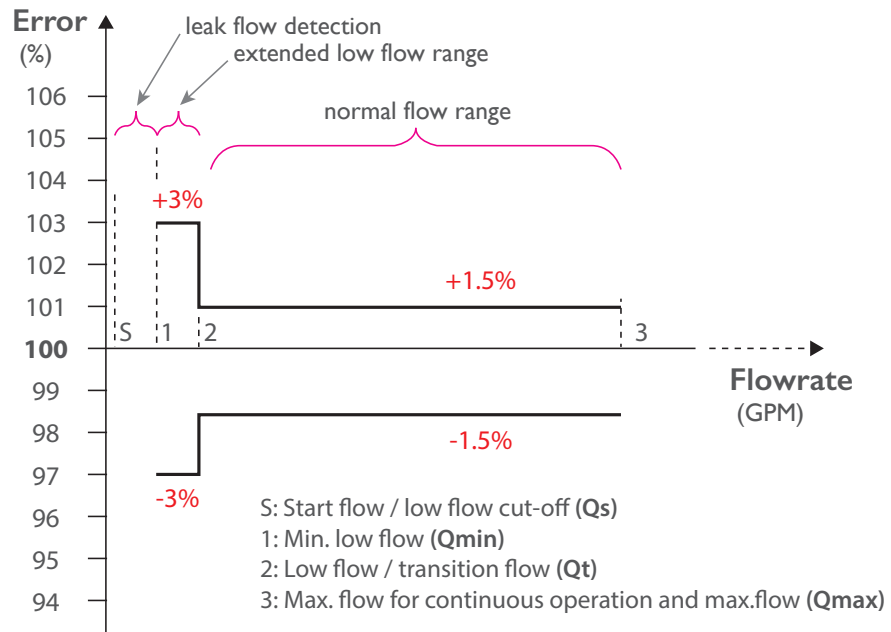


OneDrop™ Series

RESIDENTIAL ULTRASONIC WATER METER

Technical Specifications

Size	Max. Flow	Transition Flow	Min. Flow	Start Flow	Pressure Loss	Connection on Meter	Lay Length
Inch	GPM (3)	GPM (2)	GPM (1)	GPM (S)	PSI	NPSM thread / flange	Inches / (mm)
5/8 x 1/2	25	0.15	0.1	0.015	4.1 @ 15GPM	3/4"	7 1/2" (190.5)
5/8 x 3/4	25	0.15	0.1	0.015	4.1 @ 15GPM	1"	7 1/2" (190.5)
3/4	32	0.15	0.1	0.015	3 @ 15GPM	1"	7 1/2 or 9" (190.5 or 228.6)
1	55	0.4	0.25	0.04	4 @ 55GPM	3/4" thread	10 3/4" (273)
1 1/2	120	1.2	0.4	0.06	8 @ 120GPM	1 1/2" thread	12 5/8" (321)
1 1/2	120	1.2	0.4	0.06	8 @ 120GPM	1 1/2" flange	13" (330)
2	160	2	1.5	1.5	2 @ 160GPM	2" thread	15 1/4" (387)
2	160	2	1.5	1.5	2 @ 160GPM	2" flange	17" (432)





OneDrop™ Series

RESIDENTIAL ULTRASONIC WATER METER

Order Specifications

Base Unit

OneDrop - 280W - D - -

Meter Size	ID
5/8" X 1/2" (threading)	1
5/8" X 3/4" (threading)	2
3/4" (threading)	3
1" (threading)	4
1 1/2" (threading)	5
1 1/2" (flange)	6
2" (threading)	7
2" (flange)	8

Interface	ID
None (Default, TTL)	A
Built-in LoRaWan Wireless 915MHz	B

Attention

Please note that we do not offer tail pieces. Our meters use the standard NPSM threading or 2-hole oval flange, compatible to any AWWA tail piece of same size.

Optional Components

(For Base Unit with Interface option A only)

Output Interface Module (Choose One)	Model No.
M-Bus Module (wired)	280WA-MB
RS485 / Modbus Module	280WA-485MOD
Encoder Module for English Unit	280WA-E-INxx
LoRaWan 915MHz Wireless Endpoint	280AP-LRW915

About Spire Metering Technology

Formerly Shenitech, Spire Metering is a global leader in flow and energy management solutions. Through continuous innovation, we transform complex ultrasonic technology into affordable, reliable solutions for accurate flow and energy measurement. Spire Metering offers water, heat, electricity and gas meters as well as AMR/AMI solutions. To find out how we can help today, please tell us about your application.

You can contact us at solutions@spiremt.com / Tel. 978 2637 100.

